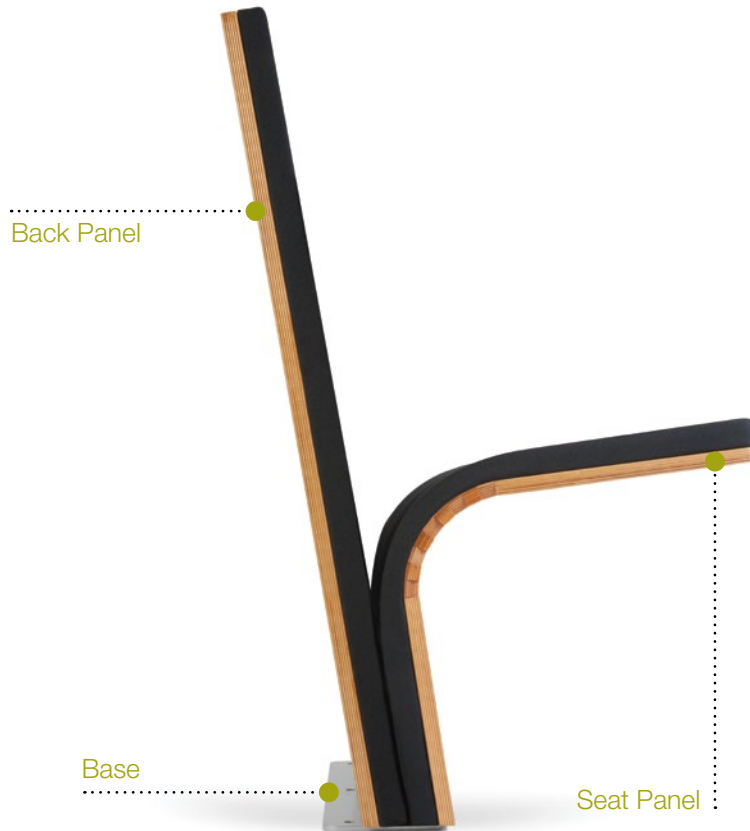


JumpSeat® Finish Guide



Finishes & Textiles

SEAT & BACK PANELS: Standard Birch Plywood or Wood Stain

BASE: Silver or Black

TEXTILES:

- Fabric – Camira Xtreme Card, Camira X2 Card
- Coated Fabric – Momentum Coated Card, Spradling Coated Card, Ultrafabrics Coated Card

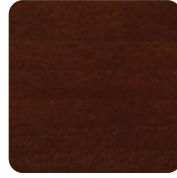
Finishes

Standard Birch Plywood

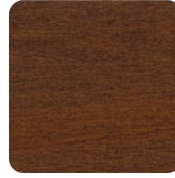


Natural

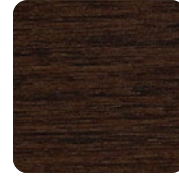
Wood Stains



Parlor Cherry



Judicial Walnut



Wenge

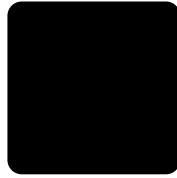


Ebony

Fixed & Movable Base Paint Colors



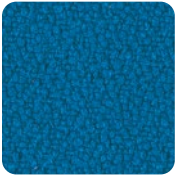
Silver



Black

Textiles

Camira Xtreme Card > [click to view](#)



Xtreme (Grade 1)

Camira X2 Card > [click to view](#)



X2 (Grade 1)

Momentum Coated Card > [click to view](#)



Beeline
(Grade 2)



Canter
(Grade 2)



Silica
(Grade 6)

Spradling Coated Card > [click to view](#)



Dolce
(Grade 2)



Hitch
(Grade 2)



Silvertex
(Grade 2)



Whisper
(Grade 1)

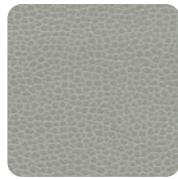
Ultrafabrics Coated Card > [click to view](#)



Linen
(Grade 5)



Pro
(Grade 5)



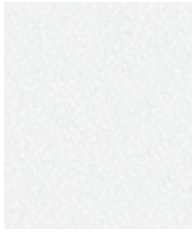
Promessa
(Grade 5)



Viva
(Grade 5)

* Refer to website for full range of colors

Xtreme



Adobo
YS165



Manado
YS166



Aruba
YS108



Solano
YS072



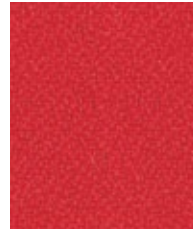
Tortuga
YS168



Sandstorm
YS071



Bridgetown
YS102



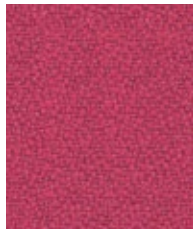
Belize
YS105



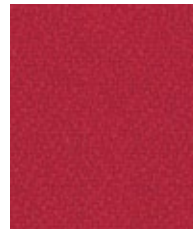
Lobster
YS076



Nougat
YS091



Diablo
YS101



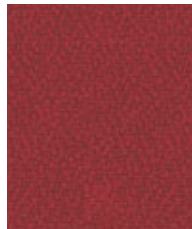
Panama
YS079



Jamaica
YS027



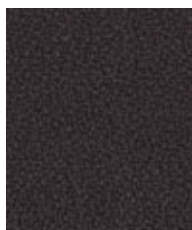
Nicobar
YS158



Calypso
YS106



Tokara
YS136



Bounty
YS086



Tarot
YS084



Tobago
YS030



Madura
YS156



Apple
YS096



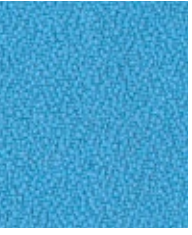
Orchilla
YS167



Rum
YS173



Campeche
YS074



Parasol
YS073



Slip
YS094



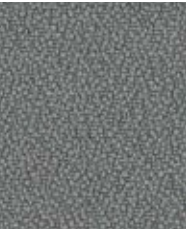
Lombok
YS159



Tonga
YS160



Buru
YS170



Blizzard
YS081



Windjammer
YS047



Montserrat
YS011



Osumi
YS171



Krabi
YS141



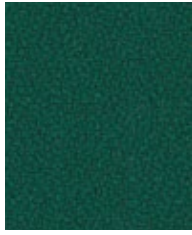
Appledore
YS077



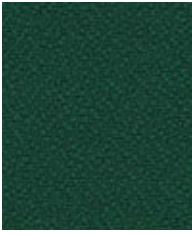
Twister
YS083



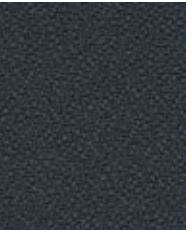
Sombrero
YS046



Taboo
YS045



Flores
YS161



Bonaire
YS172



Padang
YS145

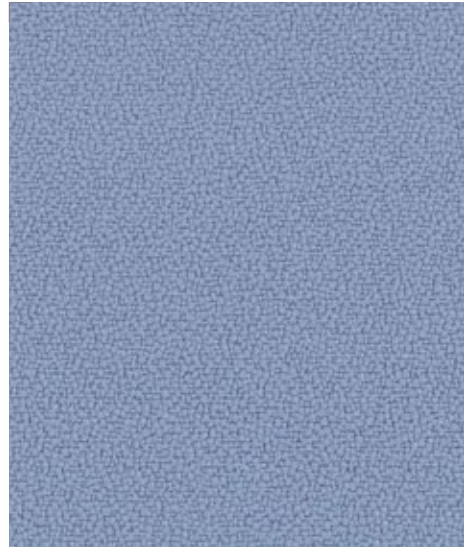
Note: Photographic fabric scans are not color accurate. Always request actual fabric samples before ordering.



Arecibo
YS174



Marianna
YS157



Steel
YS095



Anguilla
YS169



Bluebell
YS097



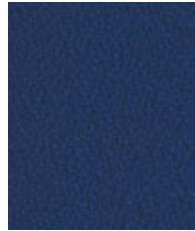
Martinique
YS004



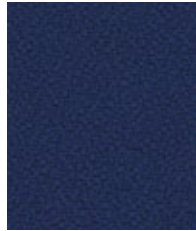
Mauve
YS069



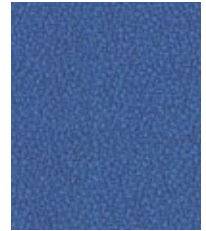
Honeymoon
YS035



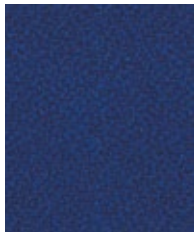
Scuba
YS082



Curacao
YS005



Bluefield
YS021



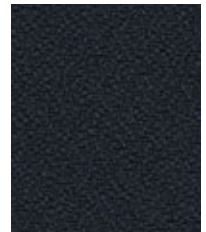
Ocean
YS100



Navassa
YS162



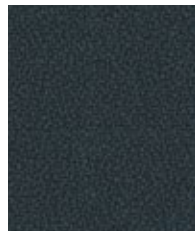
Cayman
YS024



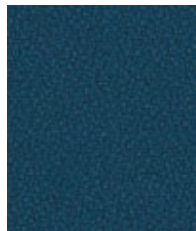
Andaman
YS144



Leeward
YS164



Arawak
YS016



Costa
YS026



Havana
YS009

Technical information

E	F	ES	D	DK	I
Composition 100% Recycled Flame Retardant Polyester. Non metallic dyestuffs.	Composition 100% Polyester retardateur de flamme recyclé. Teintures non métalliques.	Composición 100% Resistente al fuego Poliéster Reciclado. Tintes no metálicos.	Zusammensetzung 100% Recycelte schwerenflammbare Polyester. Nicht schwermetallhaltige Farbstoffe	Materiale 100% Genanvendt Polyester Flammehæmmende. Ikke metaliske farvestofte	Composizione 100% Flame Retardant Poliesteri Riciclati. Tinture prive di metalli pesanti
Environmental Made from 100% recycled polyester. Certified to the EU Ecolabel.	Écologique Fabriqué d'un polyester 100% recycle avec le certificat EU Ecolabel.	Ambiental Hecho de 100% de poliéster reciclado. Certificado con EU Flower.	Umweltfreundlich Recycelte / EU Flower zertifiziert	Millieu Genanvendt / EU Blomst certificeret	Ambientale Riciclata / Conforme alla normativa EU Flower
Width 54 inches minimum	Largeur 54 pouces minimum	Ancho 54 pulgadas mínimo	Gewicht Mindestens 54 Zoll	Bredde 54 pouces minimum	Altezza 54 pollici minimo
Weight 9 ^{1/4} oz/sq yd ±5% (14 oz/running yard ±5%)	Poids 9 ^{1/4} oz/sq yd ±5% (14 oz/running yard ±5%)	Peso 9 ^{1/4} oz/sq yd ±5% (14 oz/running yard ±5%)	Breite 9 ^{1/4} oz/sq yd ±5% (14 oz/running yard ±5%)	Vægt 9 ^{1/4} oz/sq yd ±5% (14 oz/running yard ±5%)	Peso 9 ^{1/4} oz/sq yd ±5% (14 oz/running yard ±5%)
Abrasion Resistance Meets the ACT Standard for Heavy Duty Upholstery (ASTM D4157 Wyzenbeek method) 100,000 Martindale cycles (BS EN ISO 12947-2:1999) Covered by a comprehensive 10 year wear warranty (full details available)	Résistance à l'abrasion ASTM D4157 Wyzenbeek method. Heavy Duty Upholstery 100,000 Martindale Tours (BS EN ISO 12947-2:1999) Avec une garantie totale de durabilité de 10 ans (renseignements complémentaires disponibles)	Resistencia a la abrasión ASTM D4157 Wyzenbeek method. Heavy Duty Upholstery 100,000 Martindale ciclos (BS EN ISO 12947-2:1999) Con garantía total de uso 10 años (más información disponible bajo consulta)	Scheuerfestigkeit Meets the ACT Standard for Heavy Duty Upholstery (ASTM D4157 Wyzenbeek method) 100,000 Martindale cycles (BS EN ISO 12947-2:1999) 10 Jahre Garantie (Details auf Anfrage)	Slidstyrke ASTM D4157 Wyzenbeek method. Heavy Duty Upholstery 100,000 Martindale Tours (BS EN ISO 12947-2:1999) 10 års garanti (udførlig beskrivelse af garantien kan rekvireres)	Resistenza all'abrasione ASTM D4157 Wyzenbeek method. Heavy Duty Upholstery 100,000 Martindale ciclos (BS EN ISO 12947-2:1999) Garanzia di 10 anni (dettagli disponibili)
Flammability California Technical Bulletin 117, Section E UFAC Class 1 BS 7176 : 2007 Low Hazard BS 7176 : 2007 Medium Hazard <i>Note: Flammability performance is dependent on foam used.</i>	Flammabilité California Technical Bulletin 117, Section E UFAC Class 1 BS 7176 : 2007 Low Hazard BS 7176 : 2007 Medium Hazard <i>Note: Réaction au feu dépend de la mousse utilisée.</i>	Inflamabilidad California Technical Bulletin 117, Section E UFAC Class 1 BS 7176 : 2007 Low Hazard BS 7176 : 2007 Medium Hazard <i>Condiciones ignifugas dependientes del tipo de foam utilizado.</i>	Feuersicherung California Technical Bulletin 117, Section E UFAC Class 1 BS 7176 : 2007 Low Hazard BS 7176 : 2007 Medium Hazard <i>Bemerkung: Schwerentflammbarkeit hängt von verwendetem Schaum ab.</i>	Flammesikring California Technical Bulletin 117, Section E UFAC Class 1 BS 7176 : 2007 Low Hazard BS 7176 : 2007 Medium Hazard <i>Bemærk: Flammesikkerheden er afhængig af anvendt skumtype</i>	Resistenza al fuoco California Technical Bulletin 117, Section E UFAC Class 1 BS 7176 : 2007 Low Hazard BS 7176 : 2007 Medium Hazard <i>Nota: Il grado di resistenza al fuoco dipende dal tipo di schiuma utilizzata</i>
Light Fastness AATCC-16 (40 hours)	Solidité à la lumière AATCC-16 (40 heures)	Solidité à la lumière AATCC-16 (40 heures)	Reibechtheit AATCC-16 (40 hours)	Lysægthed AATCC-16 (40 heures)	Solidità alla luce AATCC-16 (40 heures)
Fastness to Rubbing AATCC-8 (Dry: 4 minimum, Wet: 3 minimum)	Crocking AATCC-8 (Sec: 4 minimum, Mouillé: 3 minimum)	Crocking AATCC-8 (Sec: 4 minimum, Mouillé: 3 minimum)	Reibechtheit AATCC-8 (Nass: 4 minimum, Trocken: 3 minimum)	Gnidægthed AATCC-8 (Våd: 4 minimum, Tør: 4 minimum)	Resistenza allo sfregamento AATCC-8 (Umido: 4 minimo, Secco: 4 minimo)
Cleaning W	Nettoyage W	Limpieza W	Reinigung W	Farvedifferencer W	Manutenzione W
Please note that seam performance is dependent on seam construction and needle and thread type. We recommend that appropriate sewing advice be taken. Note: Batch to batch variations in shade may occur within commercial tolerances. We reserve the right to alter technical specifications without notice. The Unregistered Design Rights and the Copyright in all designs are the exclusive property of Camira Fabrics Limited.	Veuillez noter que la performance du joint dépend de sa construction ainsi que de l'aiguille et du type de fil utilisés. Remarque: Une variation de couleurs peut provenir (commerciallement tolérable). Nous réservons le droit de changer les spécifications techniques sans préavis. Les Droits de Conception non-enregistrés et les droits d'auteur de tous les motifs sont la propriété exclusives de Camira Fabrics Limited.	Tenga en cuenta que el rendimiento de la costura depende de la construcción de la costura, además de la aguja y del tipo de rosca. Le recomendamos que se aconsejen para coser la costura. Nota: Las variaciones de lote a lote en la sombra se puede producir dentro de tolerancias comerciales. Nos reservamos el derecho a efectuar modificaciones técnicas sin previo aviso. Los derechos sobre los diseños no registrados y los derechos de autor en todos los diseños son propiedad exclusiva de Camira Fabrics Limited.	Eine optimale Nahtausreissfestigkeit hängt von der Nahtfahne, der verwendeten Nadel und dem Näh-Garn ab. Wir empfehlen daher Nähveruche durchzuführen. Wichtig: Handelsübliche Farbabweichungen können auftreten und berechtigen nicht zur Reklamation. Wir behalten uns die Änderung technischer Spezifikationen vor. Die registrierten und nicht registrierten Urheberrechte der Dessinierungen sind ausschliessliches Eigentum der Camira Fabrics Limited	Yderligere information kan fås på forespørgsel. Vær opmærksom på, at optimal sømglidning er afhængig af søm-, nål- og trådtype. Vi anbefaler, at du følger relevante sy-instruktioner. Bemærk: Vi forbeholder os retten til at ændre tekniske specifikationer uden varsel. De uregistrerede designrettigheder og ophavsretten til alle designs tilhører ubetinget Camira Fabrics Limited.	Le performance cucitura dipende cuciture e l'ago e il tipo di filo. Opportuno che Consigliamo consigli di cucito da adottare. Nota: Variazioni tra diversi lotti in tolleranza ombra possono verificarsi entro commerciale. Ci riserviamo il diritto di apportare modifiche tecniche senza preavviso. I non registrati di progettazione Diritti e il Copyright in tutti i disegni sono di esclusiva proprietà di Camira Fabrics Limited.

camira

sediasystems 

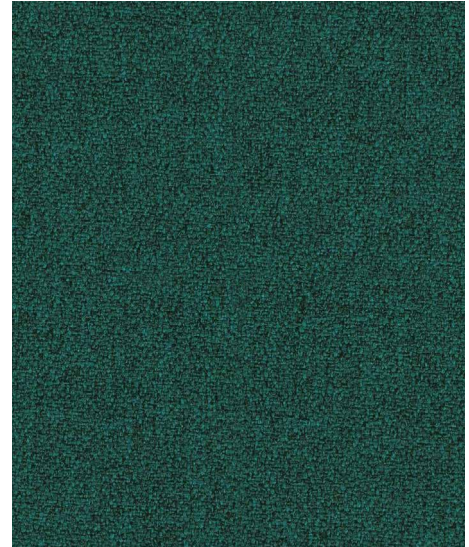
1820 W. Hubbard Street
 Suite 300
 Chicago, IL 60622
 866.892.6130
 www.sediasystems.com
 info@sediasystems.com



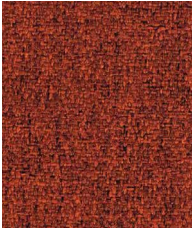
Percentage
AK016



Number
AK020



Ratio
AK001



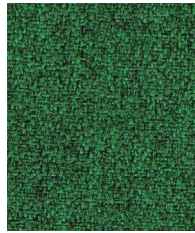
Divide
AK015



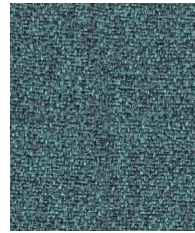
Algebra
AK005



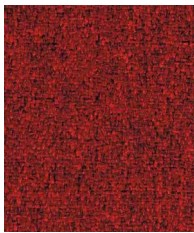
Subtract
AK013



Fraction
AK003



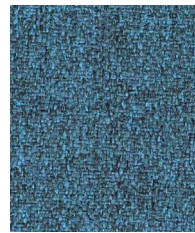
Polygon
AK002



Multiply
AK014



Equation
AK004



Value
AK006



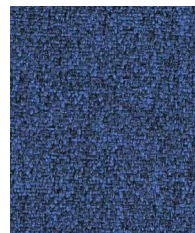
Positive
AK019



Median
AK011



Calculus
AK008



Maths
AK007



Arithmetic
AK018



Add
AK012



Metric
AK010



Acute
AK009



Formula
AK017

Technical information

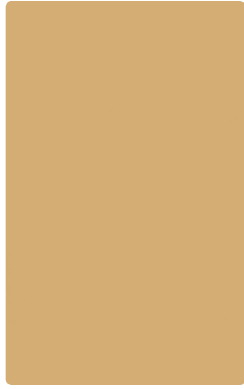
USA	UK	F	ES	D	I
Composition 100% Recycled Flame Retardant Polyester. Non metallic dyestuffs.	Composition 100% Recycled Flame Retardant Polyester. Non metallic dyestuffs	Composition 100% Polyester retardateur de flamme recyclé. Teintures non métalliques.	Composición 100% Resistente al fuego Poliéster Reciclado. Tintes no metálicos.	Zusammensetzung 100% Recycelte schwerenflammbare Polyester. Nicht schwermetallhaltige Farbstoffe	Composizione 100% Flame Retardant Poliestere Riciclata. Tinture prive di metalli pesanti
Environmental Made from 100% recycled polyester. Certified to the EU Ecolabel.	Environmental Made from 100% recycled polyester. Certified to the EU Ecolabel.	Écologique Fabriqué d'un polyester 100% recycle avec le certificat EU Ecolabel.	Ambiental Hecho de 100% de poliéster reciclado. Certificado con EU Flower.	Umweltfreundlich Recycelte / EU Flower zertifiziert	Ambientale Riciclata / Conforme alla normativa EU Flower
Width 54 inches minimum	Width 140cm minimum	Largeur 54 pouces minimum	Ancho 54 pulgadas mínimo	Gewicht Mindestens 54 Zoll	Altezza 54 pollici minimo
Weight 9 ^{1/4} oz/sq yd ±5% (14 oz/running yard ±5%)	Weight 310g/m2 ±5% (435g/lin.m ±5%)	Poids 9 ^{1/4} oz/sq yd ±5% (14 oz/running yard ±5%)	Peso 9 ^{1/4} oz/sq yd ±5% (14 oz/running yard ±5%)	Breite 9 ^{1/4} oz/sq yd ±5% (14 oz/running yard ±5%)	Peso 9 ^{1/4} oz/sq yd ±5% (14 oz/running yard ±5%)
Abrasion Resistance Meets the ACT Standard for Heavy Duty Upholstery (ASTM D4157 Wyzenbeek method) 100,000 Martindale cycles (BS EN ISO 12947-2:1999) Covered by a comprehensive 5 year wear warranty (full details available)	Abrasion Resistance 5 year guarantee / 100,000 Martindale cycles (full details available)	Résistance à l'abrasion ASTM D4157 Wyzenbeek method. Heavy Duty Upholstery 100,000 Martindale Tours (BS EN ISO 12947-2:1999) Avec une garantie totale de durabilité de 5 ans (renseignements complémentaires disponibles)	Resistencia a la abrasión ASTM D4157 Wyzenbeek method. Heavy Duty Upholstery 100,000 Martindale ciclos (BS EN ISO 12947-2:1999) Con garantía total de uso 5 años (más información disponible bajo consulta)	Scheuerfestigkeit Meets the ACT Standard for Heavy Duty Upholstery (ASTM D4157 Wyzenbeek method) 100,000 Martindale cycles (BS EN ISO 12947-2:1999) 5 Jahre Garantie (Details auf Anfrage)	Resistenza all'abrasione ASTM D4157 Wyzenbeek method. Heavy Duty Upholstery 100,000 Martindale ciclos (BS EN ISO 12947-2:1999) Garanzia di 5 anni (dettagli disponibili)
Flammability California Technical Bulletin 117, Section E UFAC Class 1 BS 7176 : 2007 Low Hazard BS 7176 : 2007 Medium Hazard <i>Note: Flammability performance is dependent on foam used.</i>	Flammability BS EN 1021 - 1:2014 (cigarette) BS EN 1021 - 2:2014 (match) BS 5852:2006 Section 4 Ignition Source 5 BS 7176:2007 Medium Hazard DIN 4102 B1 NF D 60-013:2006 UNI 9175 Class 1M <i>Note: Flammability performance is dependent on foam used.</i>	Flammabilité California Technical Bulletin 117, Section E UFAC Class 1 BS 7176 : 2007 Low Hazard BS 7176 : 2007 Medium Hazard <i>Note: Réaction au feu dépend de la mousse utilisée.</i>	Inflamabilidad California Technical Bulletin 117, Section E UFAC Class 1 BS 7176 : 2007 Low Hazard BS 7176 : 2007 Medium Hazard <i>Condiciones ignífugas dependientes del tipo de foam utilizado.</i>	Feuersicherung California Technical Bulletin 117, Section E UFAC Class 1 BS 7176 : 2007 Low Hazard BS 7176 : 2007 Medium Hazard <i>Bemerkung: Schwerentflammbarkeit hängt von verwendetem Schaum ab.</i>	Resistenza al fuoco California Technical Bulletin 117, Section E UFAC Class 1 BS 7176 : 2007 Low Hazard BS 7176 : 2007 Medium Hazard <i>Note: Il grado di resistenza al fuoco dipende dal tipo di schiuma utilizzata</i>
Light Fastness AATCC-16 (40 hours)	Light Fastness 6 (ISO 105 - B02:2014)	Solidité à la lumière AATCC-16 (40 heures)	Solidité à la lumière AATCC-16 (40 heures)	Reibechtheit AATCC-16 (40 hours)	Solidità alla luce AATCC-16 (40 heures)
Fastness to Rubbing AATCC-8 (Dry: 4 minimum, Wet: 3 minimum)	Fastness to Rubbing Wet: 4, Dry: 4 (ISO 105 - X12:2002)	Crocking AATCC-8 (Sec: 4 minimum, Mouillé: 3 minimum)	Crocking AATCC-8 (Sec: 4 minimum, Mouillé: 3 minimum)	Reibechtheit AATCC-8 (Nass: 4 minimum, Trocken: 3 minimum)	Resistenza allo sfregamento AATCC-8 (Umido: 4 minimo Secco: 4 minimo)
Cleaning W Please note that seam performance is dependent on seam construction and needle and thread type. We recommend that appropriate sewing advice be taken. Note: Batch to batch variations in shade may occur within commercial tolerances. We reserve the right to alter technical specifications without notice. The Unregistered Design Rights and the Copyright in all designs are the exclusive property of Camira Fabrics Limited.	Cleaning Washable to 60°C. Wipe clean with a damp cloth or shampoo using proprietary upholstery shampoo. Please note that seam performance is dependent on seam construction and needle and thread type. We recommend that appropriate sewing advice be taken. Note: Batch to batch variations in shade may occur within commercial tolerances. We reserve the right to alter technical specifications without notice. The Unregistered Design Rights and the Copyright in all designs are the exclusive property of Camira Fabrics Limited.	Nettoyage W Veuillez noter que la performance du joint dépend de sa construction ainsi que de l'aiguille et du type de fil utilisés. Remarque: une variation de couleurs peut provenir (commerciallement tolérable). Nous réservons le droit de changer les spécifications techniques sans préavis. Les Droits de Conception non-enregistrés et les droits d'auteur de tous les motifs sont la propriétés exclusives de Camira Fabrics Limited.	Limpieza W Tenga en cuenta que el rendimiento de la costura depende de la construcción de la costura, además de la aguja y del tipo de rosca. Le recomendamos que se aconsejen para coser la costura. Nota: las variaciones de lote a lote en la sombra se puede producir dentro de tolerancias comerciales. Nos reservamos el derecho a efectuar modificaciones técnicas sin previo aviso. Los derechos sobre los diseños no registrados y los derechos de autor en todos los diseños son propiedad exclusiva de Camira Fabrics Limited.	Reinigung W Eine optimale Nahtausreissfestigkeit hängt von der Nahtfahne, der verwendeten Nadel und dem Näh-Garn ab. Wir empfehlen daher Nähversuche durchzuführen. Wichtig: Handelsübliche Farbabweichungen können auftreten und berechtigen nicht zur Reklamation. Wir behalten uns die Änderung technischer Spezifikationen vor. Die registrierten und nicht registrierten Urheberrechte der Dessinierungen sind ausschliessliches Eigentum der Camira Fabrics Limited	Manutenzione W Tenga en cuenta que el rendimiento de la costura depende de la construcción de la costura, además de la aguja y del tipo de rosca. Le recomendamos que se aconsejen para coser la costura. Nota: las variaciones de lote a lote en la sombra se puede producir dentro de tolerancias comerciales. Nos reservamos el derecho a efectuar modificaciones técnicas sin previo aviso. Los derechos sobre los diseños no registrados y los derechos de autor en todos los diseños son propiedad exclusiva de Camira Fabrics Limited.

camira

sediashsystems 

1820 W. Hubbard Street
 Suite 300
 Chicago, IL 60622
 866.892.6130
 www.sediashsystems.com
 info@sediashsystems.com

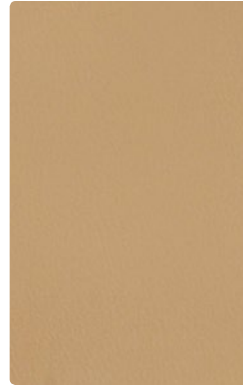
Coated Fabrics



Foray Cane



Canter Safari



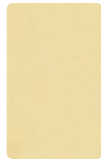
Silica Brownstone



Beeline Portobello



Eucalyptus



Dew



Sand



Saddle



Sands



Burnished



Canvas



Sisal



Pebble



Citron



Earth



Nimbus



Quartz



Dewpoint



Sprout



Geyser



Artichoke



Camel



Chestnut



Alfalfa



Aqua



Appletini



Eucalyptus



Cork



Quarry



Clay



Mica



Willow



Coppercrest



Regatta



Fossil



Nimbus



Mineral



Aubergine



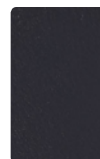
Night



Tawny



Cloak



Gallant



Oriole



Tidal



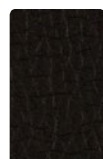
Woodland



Cinder



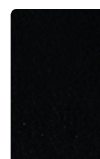
Sable



Onyx



Terra



Nero



Walnut



Eclipse

TECHNICAL INFORMATION

54" Pattern	Fiber Content & Backing	Finish	Abrasion (D.R.)	Light-fastness	Cleaning Code	Grades
BEELINE ☼ ☼ ☼ ☼ ☼ *	100% Polyurethane / PVC Free Polyester Backing	Anti-microbial, Anti-bacterial	500,000	40 Hrs. Class 4.5	W Bleach Cleanable (4:1)	2
CANTER ☼ ☼ ☼ ☼ ☼ *	100% Polyurethane / PVC Free Polyester Backing	Anti-microbial, Anti-bacterial	240,000	40 Hrs. Class 4.5	W Bleach Cleanable (4:1)	2
FORAY ☼ ☼ ☼ ☼ ☼ *	100% Polyurethane / PVC Free Polyester Backing	Resilience ^{SR}	714,000	40 Hrs. Class 4	W Bleach Cleanable (10:1)	3
SILICA ☼ ☼ ☼ ☼ ☼ *	100% Silicone Polyester Backing		365,000	200 Hrs. Class 4.5	WS Bleach Cleanable (4:1)	6

*ACT[®] Registered Certification Marks

Cleaning codes: W - Water-based foam or cleaner.

WS - Water-based cleaning agents or foam.



In 5 simple clicks, you can find hundreds of pre-approved, in grade, and in stock fabrics.

MOMENTUM
T E X T I L E S

800-366-6839
memosamples.com



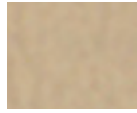
1820 W. Hubbard Street
Suite 300
Chicago, IL 60622
866.892.6130
www.sediasystems.com
info@sediasystems.com

WHISPER™
SILVERTEX®
DOLCE™
HITCH™

WHISPER™ - GRADE 1



WHI-2150 FAWN



WHI-2141 CASHEW



WHI-2117 BONE



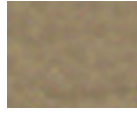
WHI-2156 PUTTY



WHI-2157 FOG



WHI-2134 PATINA



WHI-2119 GRAVEL



WHI-2158 CUCUMBER



WHI-2159 ZEST



WHI-2160 SASSAFRAS



WHI-2161 MALLARD



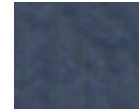
WHI-2120 ANTELOPE



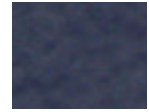
WHI-2162 PARADISE



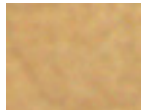
WHI-2163 INDIGO



WHI-2136 CERULEAN



WHI-2137 NAVY



WHI-2118 CAMEL



WHI-2142 COGNAC



WHI-2123 LUGGAGE



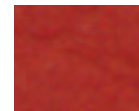
WHI-2125 CINNAMON



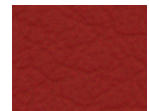
WHI-2164 CAROTENE



WHI-2165 MOLTEN



WHI-2124 SALSA



WHI-2126 BORDEAUX



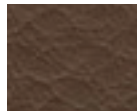
WHI-2121 CAPPUCCINO



WHI-2151 OCHRE



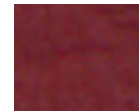
WHI-2152 MAHOGANY



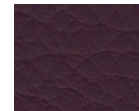
WHI-2153 TRUFFLE



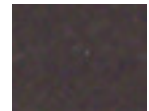
WHI-2166 BRICK RED



WHI-2127 MERLOT



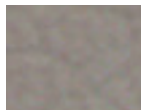
WHI-2144 SANGRE



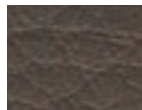
WHI-2143 ESPRESSO



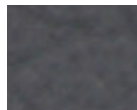
WHI-2154 PEWTER



WHI-2138 ELEPHANT



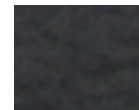
WHI-2155 STORM



WHI-2139 CHARCOAL

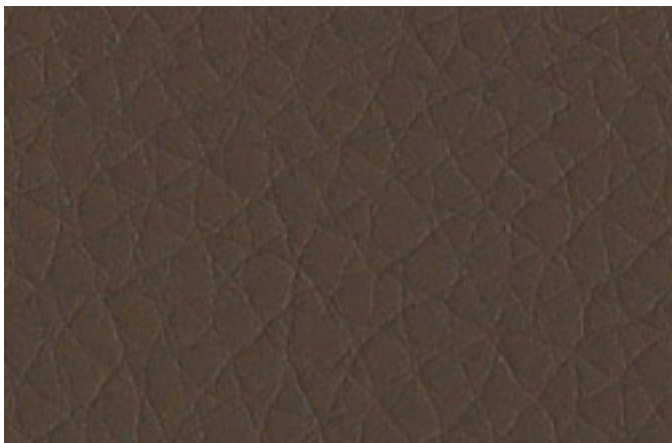


WHI-2129 FOREST

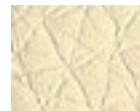


WHI-2140 BLACK

DOLCE™ - GRADE 2



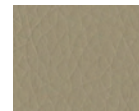
DOL-6712 MOCHA



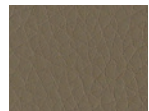
DOL-6702 IVORY



DOL-6703 ECRU



DOL-6715 FOG



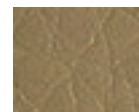
DOL-6716 BRAMBLE



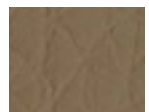
DOL-6705 SAND



DOL-6706 LATTE



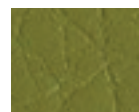
DOL-6707 CUMIN



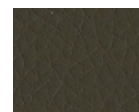
DOL-6708 MUSHROOM



DOL-6721 CITRON



DOL-6722 GRASS



DOL-6717 MOSS



DOL-6713 CHOCOLATE



DOL-6704 DUNE



DOL-6709 CAMEL



DOL-6710 LION



DOL-6711 RUSSET



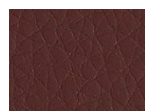
DOL-6718 TANGELO



DOL-6719 POPPY



DOL-6720 FUCHSIA



DOL-6714 BURGUNDY



DOL-6701 WHITE



DOL-6726 ARTESIAN



DOL-6727 METEOR



DOL-6728 BLACK



DOL-6725 INDIGO

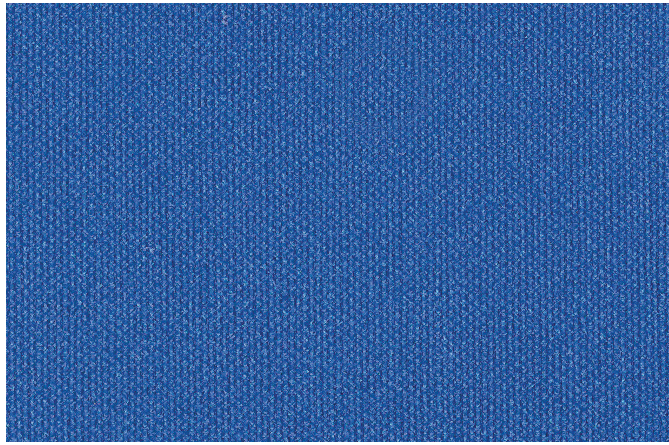


DOL-6724 JET



DOL-6723 PEACOCK

SILVERTEX® - GRADE 2



STX-8801 MARINE BLUE



STX-8833
CRÈME DE MENTHE



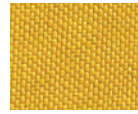
STX-8834
ACID



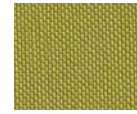
STX-8820
BASIL



STX-8821
BOTTLE



STX-8842
LIMONCELLO



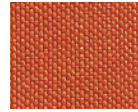
STX-8841
ZEST



STX-8819
CELERY



STX-8818
SAGE



STX-8837
BAZAAR



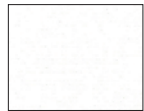
STX-8808
CHAMPAGNE



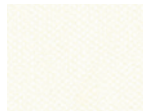
STX-8831
MARSH



STX-8835
PEAT



STX-8806
ICE



STX-8807
CREAM



STX-8802
LAGOON



STX-8803
TURQUOISE



STX-8811
MANDARIN



STX-8810
CHESTNUT



STX-8832
BRONZE



STX-8809
TAUPE



STX-8839
PLATA



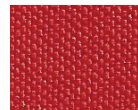
STX-8822
STORM



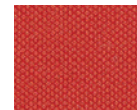
STX-8804
SAPPHIRE



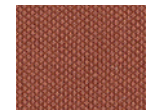
STX-8805
JET



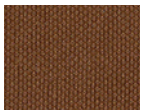
STX-8838
IMPERIAL



STX-8812
SUNKIST



STX-8814
UMBER



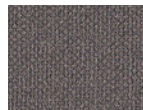
STX-8813
LUGGAGE



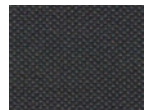
STX-8840
STERLING



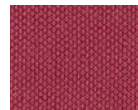
STX-8830
NEUTRA



STX-8824
METEOR



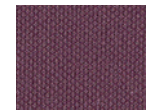
STX-8823
CARBON



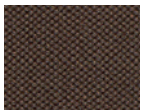
STX-8815
BORSCHT



STX-8816
RASPBERRY



STX-8817
BLACKBERRY



STX-8825
MOCHA

HITCH™ - GRADE 2



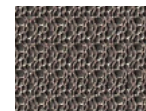
HIT-8901 METEORITE



HIT-8913
ZEST



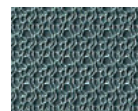
HIT-8917
FIESTA



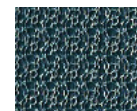
HIT-8916
NEUTRA



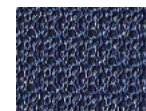
HIT-8920
JAVA



HIT-8906
WATER



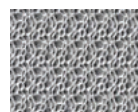
HIT-8910
CARIBBEAN



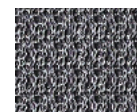
HIT-8914
SAPPHIRE



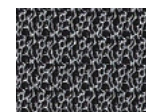
HIT-8918
INDIGO



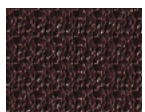
HIT-8902
FOG



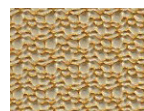
HIT-8903
PLATINUM



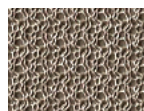
HIT-8904
CARBON



HIT-8919
CORDOVAN



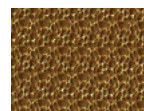
HIT-8909
SUNFLOWER



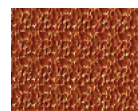
HIT-8912
PUTTY



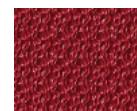
HIT-8908
BRONZE



HIT-8905
SAFFRON



HIT-8911
BRILLIANT
ORANGE



HIT-8915
LAVA



HIT-8907
CARAMEL

Content | Backing | Specifics

	Dolce	Hitch	Silvertex	Whisper
Vinyl Urethane Topcoat		•	•	•
100% Polyurethane	•			
100% Rayon Backing	•			
Hi-Loft ² ™ Backing			•	•
Ultra Hi-Loft™ Backing		•		
Weight (oz.)	15	27	30	27
Width (in.)	54	54	54	54
Roll Size (yd.)	30	30	30	30

Flame Retardancy*

	DOL	HIT	STX	WHI
Boston Fire Code - BFD IX-1			•	
Federal Aviation Spec FAR 25.853(a) <small>Appendix F, Part 1 (a)(1)(ii)</small>			•	
Federal St. 191A M 5903.1			•	
Port Authorities of NY and NJ			•	
UFAC - Class I	•	•	•	•
IMO FTP 2010 Code MSC. 307(88) <small>Part 8, 3.1 & 3.2</small>	•	•	•	•
NFPA 260 - Class I	•	•	•	•
FMVSS 302	•	•	•	•
California T.B. 117- 2013	•	•	•	•

Finishes | Characteristics



	DOL	HIT	STX	WHI
Napa Finish			•	
Antibacterial		•	•	•
Antifungal Mildew Resistant		•	•	•
Stain Resistant		•	•	
No Heavy Metals	•	•	•	•
Formaldehyde Free	•	•	•	•
Polycarbonate Resin System	•			

Performance

	DOL	HIT	STX	WHI
Abrasion - CFFA 1-a, ASTM D-4157: <small>Wyzenbeek #10 Cotton Duck</small>	100K	75K	100K	100K
Cold Crack	-10°F	-10°F	-10°F	-10°F
UV Stabilized Pigments: <small>Xenotest: AATCC Blue Wool: 1,000 hrs</small>		•	•	•
UV Stabilized Pigments: <small>QUV: ASTM Grey Scale: 650 hrs</small>		•		
Exclusively Interiors	•			•
Exterior Approved		•		

Care and Cleaning Guides

Dolce and Whisper:

Step 1: For light soiling, a solution of 10% household liquid dishsoap in warm water, applied with a soft damp cloth. Rinse with clean water and dry.

Step 2: For heavy soiling, dampen a soft white cloth with a one to one (1:1) solution of Fantastik® and water or Formula 409® and water. Rub gently and rinse with a water dampened cloth.

Step 3: For more difficult stains, dampen a soft white cloth with a solution of household bleach (10% bleach / 90% water). Rub gently and rinse with a water dampened cloth to remove bleach concentration.

Do not use with alcohol-based cleaning agents!

Hitch and Silvertex:

Step 1 (eye shadow, mascara, grease, black felt tip pen, crayon, chocolate, suntan lotion, hair and body oils*):
Remove excess spill with a damp cloth. Clean with a 1:1 mix of Ivory® liquid soap and water. Next, rinse with clean water and dry.

Step 2 (red lipstick):
Use a straight application of concentrated cleaners such as Formula 409® or Fantastik® spray cleaner. Wipe with a clean cloth, rinse with water, and dry.

Step 3 (blood, urine, feces, oil base paint, tar, and asphalt):
Use a 1:1 mix of ammonia and water, or a 1:4 mix of bleach and water. Rinse with clean water and dry.

Steps 4 (all other tough stains):
Use a 1:1 mix of isopropyl alcohol and water. If the stain persists, use straight alcohol. Rinse thoroughly with clean water and pat dry.

Note: For cleaning that requires step 4, use a soft cotton cloth saturated with the cleaning material and rub the stain in circles 10 times. Pat dry with another soft cotton cloth and check the results.

©2016 Spradling International, Inc.®

The information published in this care guide refers to the performance of PERMABLOK³® products in specific tests conducted under laboratory conditions.

Results may vary under actual conditions.

This information is not a guarantee and does not relieve the user from the responsibility of the proper and safe use of the product and all cleaning agents. The use of certain agents can be harmful to the surface appearance and lifespan of vinyl. Spradling, its agents, and assigns assume no responsibility resulting from the use of such cleaning agents to the vinyl. Please check compatibility when using this product in combination with painted or varnished surfaces.

Spradling International is not sponsored by, affiliated with, or endorsed by such trademark owners. Additionally, any use by Spradling International of any third-party trademark does not constitute any endorsement by Spradling International of such third party.

Hi-Loft²™ is a trademark of Spradling Holdings, Inc.®
Ultra Hi-Loft™ is a trademark of Spradling Holdings, Inc.®
SILVERGUARD® is a registered trademark of Spradling Holdings, Inc.®
PERMABLOK³® is a registered trademark of Spradling Holdings, Inc.®
SILVERTEX® is a registered trademark of Spradling Holdings, Inc.®
DOLCE™ is a trademark of Spradling Holdings, Inc.®
HITCH™ is a trademark of Spradling Holdings, Inc.®
WHISPER™ is a trademark of Spradling Holdings, Inc.®



This fabric meets or exceeds these ACT performance guidelines.
*Certification Marks owned by ACT®



1820 W. Hubbard Street
Suite 300
Chicago, IL 60622
866.892.6130
www.sediashsystems.com
info@sediashsystems.com

Ultraleather® Collections

sediasystems



Ultraleather® | Pro

Antimicrobial protection • Ink and denim* resistant



554-4530 Coastal



554-0008 White Wash



554-3803 Parfait



554-3352 Shore



554-3444 Toasted Bagel



554-2711 Blueberry



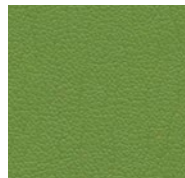
554-3214 Chestnut



554-1357 Cranberry



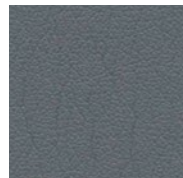
554-8229 Campfire



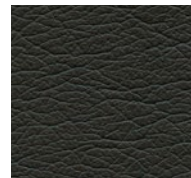
554-4443 Laurel



554-5648 Cloud



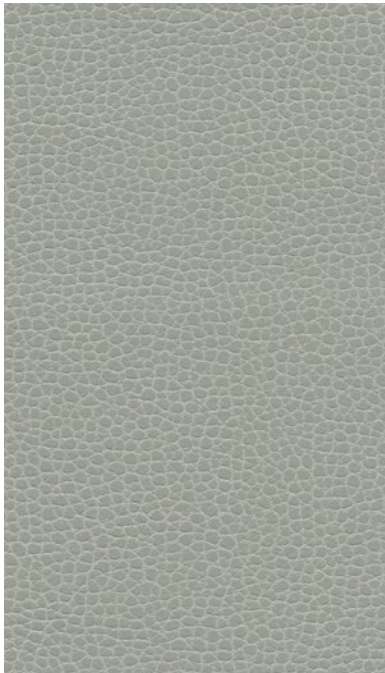
554-5626 Char



554-5618 Dark Knight

Ultraleather® | Promessa®

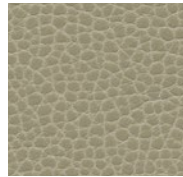
Antimicrobial protection



363-5818 Ash



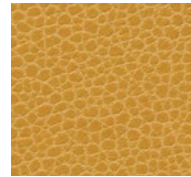
363-3464 Tusk



363-3463 Cocoa



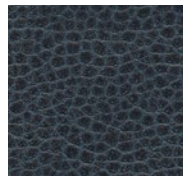
363-3141 Fields



363-5258 Sun Shower



363-2604 Stone Blue



363-2680 Atlantic



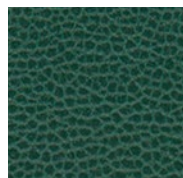
363-1387 Dogwood



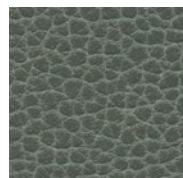
363-3145 Bronze



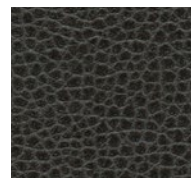
363-3037 Horsehair



363-7273 Aspen Green



363-5817 Shale



363-5845 Ebony

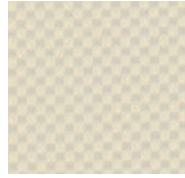
*Removal of denim dye may vary depending on the period of time the stain sets in. While Pro offers excellent protection, full removal is not guaranteed.

Ultraleather® | Viva

Antimicrobial protection



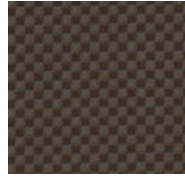
558-9369 Crocus



558-3119 Bisque



558-3526 Driftwood



558-3215 Nubian



558-1322 Poinsettia



558-2652 Azure



558-2643 Imperial



558-5623 Aluminum



558-5600 Lava

Ultraleather® | Linen

Antimicrobial protection



550-3089 Nude



550-3088 Opaline



550-3071 Fawn



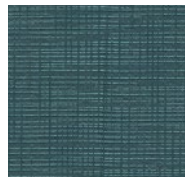
550-3091 Honey



550-4444 Citrine



550-3522 Cola



550-7270 Peacock



550-5744 Platinum



550-5783 Steel

SPECIFICATIONS

	Ultraleather® Pro Antimicrobial protection Ink and denim* resistant	Ultraleather® Promessa® Antimicrobial protection	Ultraleather® Viva Antimicrobial protection	Ultraleather® Linen Antimicrobial protection
COMPOSITION:	100% POLYURETHANE SURFACE 100% REINFORCED RAYON BACKING	100% POLYURETHANE SURFACE 65% POLYESTER, 35% RAYON BACKING	100% POLYURETHANE SURFACE 65% POLYESTER, 35% RAYON BACKING	100% POLYURETHANE SURFACE 65% POLYESTER, 35% RAYON BACKING
WEIGHT:	APPROX. 9.7 OZ. PER SQUARE YARD APPROX. 330 GRAMS PER SQUARE METRE	APPROX. 12 OZ. PER SQUARE YARD APPROX. 410 GRAMS PER SQUARE METRE	APPROX. 8.8 OZ. PER SQUARE YARD APPROX. 300 GRAMS PER SQUARE METRE	APPROX. 10 OZ. PER SQUARE YARD APPROX. 340 GRAMS PER SQUARE METRE
THICKNESS:	APPROX. 0.95 MM	APPROX. 1.1 MM	APPROX. 1.0 MM	APPROX. 1.1 MM
WIDTH:	54 INCHES / 137 CM	54 INCHES / 137 CM	54 INCHES / 137 CM	54 INCHES / 137 CM
CHARACTERISTICS				
ABRASION: (MEETS OR EXCEEDS)	ASTM D4157 / 500,000 DOUBLE RUBS* BS 2543 / 200,000 RUBS** *WYZENBEEK **MARTINDALE	ASTM D4157 / 400,000 DOUBLE RUBS* BS 2543 / 180,000 RUBS** *WYZENBEEK **MARTINDALE	ASTM D4157 / 100,000 DOUBLE RUBS* BS 2543 / 200,000 RUBS** *WYZENBEEK **MARTINDALE	ASTM D4157 / 300,000 DOUBLE RUBS* BS 2543 / 160,000 RUBS** *WYZENBEEK **MARTINDALE
ANTIMICROBIAL:	ASTM E2180	ASTM E2180	ASTM E2180	ASTM E2180
HYDROLYSIS:	14+ WEEKS ASTM D3690-02 SECT. 6.11 (HYDROLYTIC STABILITY) ISO 1419 METHOD C (ACCELERATED AGEING)	14+ WEEKS ASTM D3690-02 SECT. 6.11 (HYDROLYTIC STABILITY) ISO 1419 METHOD C (ACCELERATED AGEING)	14+ WEEKS ASTM D3690-02 SECT. 6.11 (HYDROLYTIC STABILITY) ISO 1419 METHOD C (ACCELERATED AGEING)	14+ WEEKS ASTM D3690-02 SECT. 6.11 (HYDROLYTIC STABILITY) ISO 1419 METHOD C (ACCELERATED AGEING)
ADHESION OF COATING:	ASTM D751	ASTM D751	ASTM D751	ASTM D751
TEAR STRENGTH:	ASTM D2261	ASTM D2261	ASTM D2261	ASTM D2261
BREAKING STRENGTH:	ASTM D5034	ASTM D5034	ASTM D5034	ASTM D5034
COLORFASTNESS				
CROCKING:	AATCC 8, CLASS 5 WET & DRY	AATCC 8, CLASS 5 WET & DRY	AATCC 8, CLASS 5 WET & DRY	AATCC 8, CLASS 5 WET & DRY
LIGHT:	AATCC 16.3, 200 HOURS, GRADE 4-5 ISO 105 - B02 : 1999 GRADE 7/8	AATCC 16.3, 200 HOURS, GRADE 4-5 ISO 105 - B02 : 1999 GRADE 7/8	AATCC 16.3, 200 HOURS, GRADE 4-5 ISO 105 - B02 : 1999 GRADE 7/8	AATCC 16.3, 200 HOURS, GRADE 4-5 ISO 105 - B02 : 1999 GRADE 7/8
F/R RATING (HFR FREE)				
F/R RATING:	ASTM E84 (ADHERED) CLASS A BS 5852 PART 0 & 1 CA TB 117-2013 PASS FMVSS 302 & 95/28 ANNEX IV PASS NFPA 260 CLASS 1 UFAC CLASS 1	ASTM E84 (ADHERED) CLASS A BS 5852 PART 0 & 1 CA TB 117-2013 PASS FMVSS 302 & 95/28 ANNEX IV PASS NFPA 260 CLASS 1 UFAC CLASS 1	ASTM E84 (ADHERED) CLASS A BS 5852 PART 0 & 1 CA TB 117-2013 PASS FMVSS 302 & 95/28 ANNEX IV PASS NFPA 260 CLASS 1 UFAC CLASS 1	ASTM E84 (ADHERED) CLASS A BS 5852 PART 0 & 1 CA TB 117-2013 PASS FMVSS 302 & 95/28 ANNEX IV PASS NFPA 260 CLASS 1 UFAC CLASS 1

* CAN BE TREATED TO MEET FAR SPECIFICATIONS.

* THESE FABRICS, WHEN TREATED AND/OR USED WITH OTHER COMPATIBLE FURNITURE COMPONENTS, HAVE BEEN SHOWN TO PERFORM WELL UNDER THE FIRE TEST CONDITIONS OF CALIFORNIA TECHNICAL BULLETIN 133, ASTM E 84 (UNADHERED), BS 5852 SOURCE 5 ("CRIB 5"), BS 7175, BS 5867 PART 2 TYPE B, IMO A.652(16), EN 1021 PARTS 1 & 2, AND NFPA 701.

* REMOVAL OF DENIM DYE MAY VARY DEPENDING ON THE PERIOD OF TIME THE STAIN SETS IN. WHILE PRO OFFERS EXCELLENT PROTECTION, FULL REMOVAL IS NOT GUARANTEED.

Cleaning & Care Instructions

- Clean with soap and water, or alcohol-based cleaners like Fantastik® and Formula 409®
- Disinfect using a 1:5 bleach/water solution
- Ultraleather® | Pro - for ink and tough stains, clean using isopropyl/rubbing alcohol
- Rinse all cleaning solutions with clean water

Earth Friendly

- **GREENGUARD Certified**
 - Meets stringent VOC emission standards
 - Promotes healthier indoor air quality
 - Contributes towards satisfying credits under LEED® and level®, BIFMA
- Compliant with Prop 65
- Less than 100 ppm of antimicrobial treatment
- No Conflict Minerals
- No Flame Retardants (ex. Halogenated, Brominated)
- No PBDEs (Polybrominated Diphenyl Ethers)
- No Plasticizers, Heavy Metals, Stabilizers, Phthalates or Bisphenol A (BPA)
- No POPs (Persistent Organic Pollutants)
- No PVC (Polyvinyl Chloride)
- No toxic by-products
- Over 99% of solvents recaptured and recycled



1820 W. Hubbard Street
Suite 300
Chicago, IL 60622

T 866.892.6130
www.sediasystems.com
info@sediasystems.com

12/16

www.ultrafabricsllc.com

Ultrafabrics® and logo, Ultraleather®, Brisa®, Ultratech™ and Promessa® are trademarks of Ultrafabrics, LLC. Made in Japan.

